

★ ★ ICONIC CUP 2023

ICONICRC VINTAGE RACING

Round 1 Mendip: April 1st & 2nd

Round 2 Broxtowe: April 29th & 30th

Round 3 Carlisle: May 27th & 28th

Round 4 Halifax: June 24th & 25th

Round 5 West London: July 8th & 9th

Round 6 Broxtowe: August 26th & 27th

PARKINSON'S^{UK}
CHANGE ATTITUDES.
FIND A CURE.
JOIN US.



The Iconic Cup pays homage to the on-road 1:10 electric Tamiya Eurocup which partially ended in 2004 and the classes reflect that classic racing series.

Format

Saturday Afternoon Practise. Sunday Race Day. Six Classes. Four rounds of Qualifying and a Final. Round by Round Qualifying or Fastest Time of the Day Qualifying will be decided by the hosting club on the day based upon weather conditions. Best Four out of Six rounds for the Championship. Gates typically open at 07:30 on Race Day. Drivers Briefing at 09:15 with the first round of qualifying at 09:30.

Awards

1st, 2nd & 3rd in each Final at each round will receive a Trophy and a Buckley Bond Racecraft Pit Shop Voucher. The Buckley Concours winner at each round will receive a £50 Racecraft Pit Shop Voucher. 1st 2nd & 3rd in each Class after the 6 rounds will receive a trophy with the winner in each class becoming Champion. Junior awards to be presented at the final round.

Entry Fees

The price is £16 per entry with a percentage going to Parkinson's UK and will be requested via email to be paid using PayPal prior to each round. **There will be no refunds for cancellations.**

Online Entry

Entry is online only. Entry links will be published early in 2023. Entrants will be separately emailed when it is time to pay using PayPal.

BRCA

BRCA membership is a requirement. The Licence costs £20 per annum and runs from December to December. It can be purchased online from: <https://www.brca.org/>

Saturday Open Practise and Onsite Camping

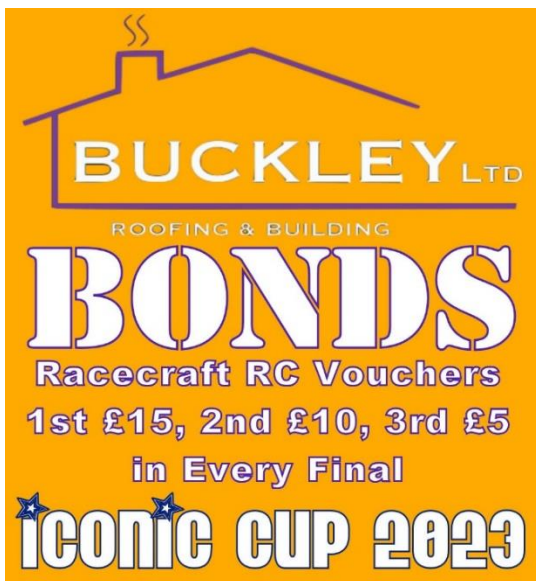
- Open Practise at Mendip, Broxtowe, Carlisle, Halifax and West London is £5 cash to be paid at race control on the day.
- Mendip Camping is £7.50 to be booked and paid online via a link released nearer the time.
- Halifax Camping with mains electricity is £10 per night, paid on the day by cash or card and available on Friday and Saturday. No advance booking needed.
- Broxtowe, Carlisle and West London Camping is free. No advance booking needed.

Pit Shop

Racecraft R/C will have a Pit Shop at every round. <https://www.racecraftrc.co.uk/>



Buckley Bonds



Buckley Concours



Classes and Rules

Formula 1



F-103

F-102

F-101

- Team Powers Branded Brushed V3 Cup Racer (or Tamiya Torque Tuned Motor as a backup).
- Gearing: Open
- Formula 1 Body Shell.
- Any commercially available tyre.
- Any commercially available hop-up except gyros.

M-Chassis



**FWD: M-01
M-01M**

**M-03
M-03M
M-03L**

**RWD: M-02
M-02M**

**M-04
M-04M
M-04L**

- Team Powers Branded Brushed V3 Cup Racer (or Tamiya Torque Tuned Motor as a backup).
- Gearing: Tamiya with unlocked differential.
- Strict Scale Body Rules. Please see the **M-Chassis Bodies** and **Wings** sections of this document.
- Any commercially available M-Chassis wheel.
- Any commercially available tyre, except Foam.
- No anti-roll bars
- Permitted commercially available hop-ups:

Oil Shocks & Springs
Rear Toe-in Uprights
Suspension Arms

Wheel Hex Adapters
Front Uprights
Tamiya Differential

Motor Mount
Upper Shock Mounts

Universal Drive Shafts
Chassis Braces

Stock Touring Car



TT-01

TT-01E

TL-01

- Core-RC 21T Brushed (or Tamiya Torque Tuned Motor as a backup).
- Gearing: Tamiya with unlocked differential.
- Strict Scale Body Rules. Please see the **Bodies** and **Wings** sections of this document.
- Any commercially available tyre, except Foam.
- Permitted commercially available hop-ups:

Ball Races
Tamiya 53665 Spur Gear Set (TT-01)

Shocks

Aluminium Hexes

Aluminium Prop-shaft

Motor Mount

FF Touring Car



FF-02

FF-01

- Team Powers Branded Brushed V3 Cup Racer (or Tamiya Torque Tuned Motor as a backup).
- Gearing: Tamiya with unlocked differential.
- Strict Scale Body Rules. Please see the **Bodies** and **Wings** sections of this document.
- Any commercially available tyre, except Foam.
- No Carbon/FRP Chassis.
- Permitted commercially available hop-ups:

Ball Races Shocks Aluminium Hexes Aftermarket Suspension Turnbuckles
Motor Mount CVDs (FF-02) Tamiya Ball Differential (FF-02) Toe-in Rear Uprights (FF-02)

Super Stock Touring Car



TA-04R

TA-03F, F-S

TB-02

TL-01

TT-01

TA-04S

TA-03R, R-S

TB-01

TL-01 LA

TT-01E

TA-04SS

- Team Powers Branded Brushed V3 Cup Racer (or Tamiya Torque Tuned Motor as a backup).
- Gearing: Tamiya with unlocked differential.
- Strict Scale Body Rules. Please see the **Bodies** and **Wings** sections of this document.
- Any commercially available tyre, except Foam.
- Any commercially available hop-ups excluding Carbon/FRP Chassis.

Other eligible chassis: TA-01, TA-02, TA-02W, TA-02SW, TA-02RS

GT Touring Car



TRF415 (all editions)

TRF414, X, M, M II, M WCR, M CM

TB Evo I, II & III

TB-01

TB-02

TA-04, R, S, SS

TA-03, F, R, F-S, R-S

TA-02, W, SW, RS

TA-01

TL-01

TL-01 LA

TT-01

TT-01E

- 13.5T Brushless Motor limit. Blinky Mode. Any manufacturer.
- Gearing: Open
- Strict Scale Body Rules. Please see the **Bodies** and **Wings** sections of this document.
- Any commercially available tyre, except Foam.
- Any commercially available hop-ups including Carbon/FRP Chassis.
- Hop-ups for later models which do not offer performance benefits will be considered if the original part is either unavailable or expensive. For example; Pulleys. Pre-approval required.

Control Motors (all classes except GT Touring Car)

Stock Touring Car: Core-RC 21T Brushed Motor (or a Tamiya Torque Tuned Motor as a backup).

Formula 1, M-Chassis, FF Touring Car, Super Stock Touring Car: Team Powers Branded Brushed V3 Cup Racer (or a Tamiya Torque Tuned Motor as a backup).

- Available for £14.99 at: https://www.team-powers.co.uk/index.php?route=product/product&path=89_61&product_id=160



General

Hard Cased 2S LiPo (7.4v/7.6v HV). LiPo's must be charged in a LiPo bag. Maximum charge voltage of 8.4v. LiPo batteries will be randomly tested for overcharging. Overcharging of LiPo batteries will mean expulsion from the Iconic Cup. 7.2v NiMh and NiCad Battery packs may also be used.

Non-Tamiya hardware parts including screws, ball joints and turnbuckles may be used.

Steering turnbuckles, Heatsinks, Fans, High Torque Servo Savers, Tyre Warmers & Tyre Additive (except Wintergreen) are permitted.

Except for the GT class front end, the differential must not be locked up. When either wheel is rotated by hand, the opposite wheel must rotate in the opposite direction.

Equipment does not need to be BRCA/ROAR approved.

Exceptions

Formula 1, Stock TC, FF TC, Super Stock TC, GT TC: The chassis can be modified to accommodate LiPo's which don't quite fit. Any chassis modifications to enable batteries to fit must be sympathetic and **need to be ok'd prior to the event. Please try to avoid these modifications.** Some rounded LiPo's such as the Brainergy and Core-RC are the same size as NiMh batteries. Removing the ribs from the battery bay in the TT-01 chassis is ok and doesn't require pre-approval.

M-Chassis, TL-01: The later 2-hole batteries holders can be used. Tamiya items #50793 and #53336.

TB-02: Universal Shafts can be used because they are lighter on the differential. Tamiya items #53499 #53500 #53501. The TB-02 Evo III Diff Halves can be used because the original plastic ones are prone to wear and are expensive.

M-03, FF-02: Front and rear shock tower braces are permitted. Good examples are available from TheRCRacer.com and Tudor-Hart Racing.

All classes: Steering turnbuckles are permitted.

All classes: Aluminium 3rd party parts might be permitted where the original parts are either hard to obtain or are expensive. **These need to be ok'd prior to the event.**

Scrutineering



Cars must be placed in parc ferme after every heat where they may be checked while the racers are marshalling.

If a potential rule infringement is reported by an entrant, the car will be called to Scrutineering for inspection. Please think carefully before reporting another entrant and make sure you know exactly who it is and which car before you do so. Every case will be dealt with at Scrutineering and must be reported on the day during the racing. Please report to Lance Walker or John Weston.

Stock Touring Car Bodies

- Scale Touring Car and Rally Body Shells only. Bodies must be cut to the correct lines to remain scale. Examples:



- No GT, Pikes Peak, LMP or NASCAR style bodies.
- No 'jelly mould / aero' type shells.
- Quirky bodies that aerodynamically won't win but are in the spirit of the cup are acceptable. Examples:



- If you're concerned that your body isn't eligible, contact John Weston who will give a yes or no answer.

FF Touring Car Bodies

- Scale Touring Car and Rally Body Shells only. Bodies must be cut to the correct lines to remain scale.
- Depictions of 1:1 Front Wheel Drive cars preferred. Examples:



- No GT, Pikes Peak, LMP or NASCAR style bodies.
- No 'jelly mould / aero' type shells.
- If you're concerned that your body isn't eligible, contact John Weston who will give a yes or no answer.

Super Stock Touring Car Bodies

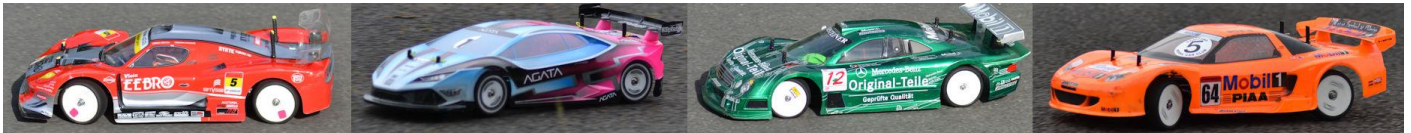
- Scale GT Bodies preferred (Pikes Peak Suzuki Escudo accepted). Bodies must be cut to the correct lines to remain scale. Examples:



- Scale Touring Car and Rally Body Shells accepted.
- No LMP or NASCAR style bodies.
- No 'jelly mould / aero' type shells.
- If you're concerned that your body isn't eligible, contact John Weston who will give a yes or no answer.

GT Touring Car Bodies

- Scale GT Bodies preferred. Bodies must be cut to the correct lines to remain scale. Examples:



- Scale Touring Car and Rally Body Shells accepted.
- No LMP or NASCAR style bodies.
- No 'jelly mould / aero' type shells.
- If you're concerned that your body isn't eligible, contact John Weston who will give a yes or no answer.

Results of Touring Car body eligibility enquires are detailed at the end of this document

M-Chassis Bodies

These are listed and the end of this document.

Wings (M-Chassis and Touring Car)

Wings cannot be added to bodies that didn't originally come with one.

M-Chassis: Commercially available scale Wings can be fitted to body shells to replace damaged/lost wings to the same scale and mounting point as the original wing. If a wing is added that clearly provides more aero then it will have to be removed.

Touring Car: Wings can only be replaced with the following options and cut to the lowest line:

- Tamiya Wings: 53470, 54494, 54688, 54729.
- Fastrax Wing & Mirror Set: FAST2221.

Further Information

Skill Levels

A skill level will be requested at online entry in order to keep similarly skilled entrants together in heats.

Marshalling

Racers must provide a Hi-Viz Waistcoat for Marshalling.

Transponders

You will require a compatible transponder. Please contact the clubs for details of compatible transponders.

West London (RC3) have a limited supply to loan and they require a £20 refundable deposit. They do not require a mounting hole through the body.

Mendip (RC3), Broxtowe (RC3), Carlisle (RC4) and Halifax (RC4) do not supply hand-out/loan transponders.

Battery Charging

You will need to provide your own source of power for the recharging of batteries. Generators may be used but please try to ensure to position them so they are out of harm's way and so they are not an annoyance to other people attending the meeting. **Please charge LiPo's in a fire sack.**

Camping

All clubs are offering onsite camping on the Saturday night prior to race day. Halifax on the Friday too.

Facilities

All clubs have toilets. Hot Food should be available at all clubs.

Directions

Detailed directions are on the club websites.

Mendip: <http://www.mendiprccraceway.co.uk/>

Accommodation Road
Bleadon
Weston-Super-Mare
North Somerset
BS24 0AP

Broxtowe: <http://www.broxtowemcc.co.uk/>

Hall Park
Mansfield Road
Eastwood
Nottingham
NG16 3EA

Carlisle: <https://www.carlisleradiomodelcarclub.com/>

Down-a-gate Raceway
Warwick Bridge
Carlisle
Cumbria
CA4 8RE

Halifax: <http://www.halifaxtrack.co.uk/>

Stainland Road
Halifax
West Yorkshire
HX4 8LS

West London: <http://www.wlrc.co.uk/>

Sutton Court Road
Hillingdon
Middlesex
UB10 9HT

Contacts

General Queries to: john-weston@hotmail.co.uk

Venue Queries to the individual clubs.

News

For the latest Iconic Cup news, please follow the Facebook events for each date.

Round 1: <https://www.facebook.com/events/833540157815968>

Round 2: <https://www.facebook.com/events/619024750010544>

Round 3: <https://www.facebook.com/events/504328727805620>

Round 4: <https://www.facebook.com/events/5421811604533878>

Round 5: <https://www.facebook.com/events/405174391693391>

Round 6: <https://www.facebook.com/events/648247250201631>

Facebook Group Forums

Iconic Cup Stock & FF TC: <https://www.facebook.com/groups/2360584570843689>

Iconic Cup GT & Super Stock TC: <https://www.facebook.com/groups/1190245397820554>

Iconic Cup M-Chassis & F1: <https://www.facebook.com/groups/2231335267180775>

The Iconic Cup raises money for Parkinson's UK

PARKINSON'S^{UK}
CHANGE ATTITUDES.
FIND A CURE.
JOIN US.

Our Sponsors



M-Chassis Bodies

All Tamiya manufactured M-Chassis bodies are eligible. Only the non-Tamiya bodies listed here are eligible. If the body is not on this list, it cannot be used at the Iconic Cup. Bodies must be cut to the correct lines to remain scale.

Rcon 1275 Mini Clubman – Available from RaceCraft R/C in the UK.

<https://www.ebay.co.uk/str/racecraftrc>

Rcon 1275EST Mini Clubman – Available from RaceCraft R/C in the UK.

<https://www.ebay.co.uk/str/racecraftrc>

Rcon M-Bahamut Truck – Available from RaceCraft R/C in the UK.

<https://www.ebay.co.uk/str/racecraftrc>

Rcon RS200 Clear Lexan Body -225mm WB – Available from RaceCraft R/C in the UK.

<https://www.racecraftrc.co.uk/product-page/rcon-rs200-clear-lexan-body-225mm-wb>

Rcon Polo R4 WRC Clear Lexan Body – Available from RaceCraft R/C in the UK.

<https://www.racecraftrc.co.uk/product-page/rcon-polo-r4-wrc-clear-lexan-body>

Blitz Delta – Available from RaceCraft R/C in the UK.

<https://www.racecraftrc.co.uk/product-page/blitz-delta-clear-unpainted-1-10-m-class-225mm-0-8mm-body>

Mon-Tech 595 Sport – Available from Schumacher Racing in the UK.

<https://www.racing-cars.com/bodyshells/brand-brand=montech-bodies/montech-595-sport-1-10-body-for-tamiya-mini-mt008001?returnurl=%2fbodyshells%2fbrand-brand%3dmontech-bodies%2f%3fcount%3d96>

Mon-Tech Turbo Spidi – Available from Schumacher Racing in the UK.

<https://www.racing-cars.com/bodyshells/brand-brand=montech-bodies/montech-turbo-spidi-1-10-body-tamiya-mini-mt009004?returnurl=%2fbodyshells%2fbrand-brand%3dmontech-bodies%2f%3fcount%3d96>

Mon-Tech Turbo 5 – Available from Schumacher Racing in the UK.

<https://www.racing-cars.com/bodyshells/brand-brand=montech-bodies/montech-turbo-5-1-10-body-for-tamiya-mini-mt008002?returnurl=%2fbodyshells%2fbrand-brand%3dmontech-bodies%2f>

Mon-Tech Five – Available from Schumacher Racing in the UK.

<https://www.racing-cars.com/bodyshells/brand-brand=montech-bodies/montech-5-1-10-body-for-tamiya-mini-mt009001?returnurl=%2fbodyshells%2fbrand-brand%3dmontech-bodies%2f%3fcount%3d96>

Team C TM106 210MM Mini & Team C TM205 225MM Mini – Available from PBM Racing in the UK.

<https://www.pbmracing.co.uk>

Arion Glf GT1 – Available from SMD Direct in the UK

<https://smddirect.co.uk/collections/arion-bodyshells/products/ar02-0002-arion-glf-gt1-m-class-body-210mm>

Arion RennSport-Five-M – Available from SMD Direct in the UK

<https://smddirect.co.uk/collections/arion-bodyshells/products/ar02-0003-arion-rennsport-five-m-m-class-body-210mm?variant=18353214029920>

Arion Herb-GT – Available from SMD Direct in the UK

<https://smddirect.co.uk/collections/arion-bodyshells/products/ar02-0004-arion-herb-gt-m-class-body-210mm>

Arion T-Star – Available from SMD Direct in the UK

<https://smddirect.co.uk/collections/arion-bodyshells/products/ar02-0007-arion-t-star-m-class-body-225mm>

Arion SeeRZee – Available from SMD Direct in the UK

<https://smddirect.co.uk/collections/arion-bodyshells/products/ar02-0006-arion-seerzee-m-class-body-225mm>

Arion S1-Roc GT – Available from SMD Direct in the UK

<https://smddirect.co.uk/collections/arion-bodyshells/products/ar02-0005-s1-roc-gt-m-class-body-225mm>

Kamtec Escort Mark 1 – Available direct from Kamtec

https://www.kamtec.co.uk/epages/BT4645.sf/en_GB/?ObjectPath=/Shops/BT4645/Products/K0147%5B9%5D

Phat Bodies Mini Miglia and MK2 Escort – Available direct from Phat Bodies.

<https://www.phatbodies.co.uk/products>

HPI Datsun 510 – Available from Modelsport.

<https://www.modelsport.co.uk/hpi-datsun-510-body-wb225mm-f0-r3mm-/rc-car-products/32857>

HPI BMW 2002 Turbo – Available from Modelsport.

<https://www.modelsport.co.uk/hpi-bmw-2002-turbo-body-wb225mm-f0-r0mm-/rc-car-products/38912>

Xpress Sporty Pickup – Available from RCMart in Hong Kong.

http://www.rcmart.com/sporty-pickup-truck-lexan-clear-body-chassis-p-76791.html?cPath=438_874

Xpress Vintage Pickup – Available from RCMart in Hong Kong.

http://www.rcmart.com/vintage-retro-pickup-truck-lexan-clear-body-chassis-p-76792.html?cPath=438_874

Racers Paradise Opel Corsa – available from Racers Paradise in Germany

https://www.racersparadise.de/de/opel-corsa-b—lexan-karosseriebausatz-1-10-fUer-m-chassis-inkl-decals-/-masken_146.html

Racers Paradise Opel Speedster – available from Racers Paradise in Germany

https://www.racersparadise.de/de/opel-speedster-karosseriebausatz-1-10-fUer-m-chassis—unlackiert-inkl-decals_241.html

ABC Hobby M-Chassis Bodies – Available from RCMart in Hong Kong. <http://www.rcmart.com>

#66041 Nissan Xanadu Cube	#66309 Datsun 510 Bluebird	
#66043 Nissan Sunny Coupe	#66310 Datsun 510 Bluebird	
#66047 Datsun 510 Bluebird BRE	#66312 Datsun Fairlady 240Z	
#66048 Nissan Maruzen Technica Tomei	#66317 Toyota TE27 Trueno	
#66049 Honda CR-X Ballade Sports	#66318 Honda CR-Z Cusco	
#66300 Datsun Fairlady 240Z	#66319 Datsun Bluebird Karosserie	
#66302 Nissan Fairlady Z S30	#66321 Honda Mugen CR-X Ballade	
#66303 Toyota TE27 Corolla Levin	#66322 Honda Mugen CR-X Pro 2 Cyber	
#66304 Toyota Celica LB2000GT	#66323 Honda Mugen CR-Z RZ	
#66305 Toyota Sports 800	#66400 Honda CR-Z	
#66306 Nissan March K12	#66401 Honda City Turbo II	
#66307 Toyota MR2 AW11	#66402 Honda Civic Type R Euro	#66044 Mini Countryman
#66308 Toyota Sports 800	#66403 Honda CR-X Cyber Sports	#66045 Mini Pickup

Spice #SPA-629 Honda Civic Type R

<http://www.rcmart.com/spice-spa629-honda-civic-type-210mm-clear-body-p-84041.html>

Spice #SPA-612 Subaru Samba

<http://www.rcmart.com/spice-spa612-subaru-sambar-truck-mini-size-body-shell-p-64489.html>

Spice #SPA-621 Suzuki Cappuccino

<http://www.rcmart.com/spice-suzuki-cappuccino-mini-clear-body-210mm-mchassis-cars-spa621-p-36757.html>

Spice #SPA-619 Suzuki Fronte

<http://www.rcmart.com/spice-spa619-suzuki-fronte-mini-210mm-p-77409.html>

Spice #SPA-613 Suzuki Wagon R

<http://www.rcmart.com/spice-suzuki-wagon-stingray-mini-wheelbase-210mm-chassis-spa613-p-35426.html>

Spice #SPA-617 Toyota Passo

<http://www.rcmart.com/spice-spa617-toyota-passo-mini-size-clear-body-p-67186.html>

L and L Models Scale M-Chassis Bodies

TM106 Mini 210mm & Mini 225mm <https://landlmodels.co.uk/collections/m-chassis/products/mini-210mm-m-chassis-body-shell?variant=19667361398848>

TM218 Ford Fiesta 210mm (all versions) <https://landlmodels.co.uk/collections/m-chassis/products/ford-feista-rockstar-210mm-m-chassis-body-shell?variant=19666489344064>

TM246 Mini Dino 246 210mm & TM405 Mini Dino 246 225mm <https://landmodels.co.uk/collections/m-chassis/products/mini-dino-246-210mm-m-chassis?variant=26801201971264>

TM356 356 Porsche 210mm <https://landmodels.co.uk/collections/m-chassis/products/tm356-210mm-365-porsche?variant=31563655184427>

TM308 Honda FK8 210mm <https://landmodels.co.uk/collections/m-chassis/products/honda-fk8-mini-210mm?variant=29492542636093>

TM234 R34 GTR 210mm <https://landmodels.co.uk/collections/m-chassis/products/mini-gtr-210mm-m-chassis?variant=29380620714045>

TM360 Subaru 360 210mm <https://landmodels.co.uk/collections/m-chassis/products/subaru-m-chassis-210mm?variant=27103518261312>

TM605 BMW 2002 225mm <https://landmodels.co.uk/collections/m-chassis/products/bmw-2002-225mm>

TM225 Datsun 510 225mm <https://landmodels.co.uk/collections/m-chassis/products/datsun-510-225mm-m-chassis>

TM386 AE86 225mm <https://landmodels.co.uk/collections/m-chassis/products/ae86-225mm>

TM959 Porsche 959 M Chassis 210mm (All Versions) <https://landmodels.co.uk/collections/m-chassis/products/911-m-chassis-210mm?variant=29499225899069>

Honda Jazz Mini 210mm <https://landmodels.co.uk/collections/m-chassis/products/honda-jazz-mini-210mm?variant=29503942426685>

TM705 210mm BMW 320i (Kit Wing Only!) <https://landmodels.co.uk/collections/m-chassis/products/210mm-bmw-320i-m-chassis?variant=31422813601835>

TM935 Porsche 935 210mm (Kit Wing Only!) <https://landmodels.co.uk/collections/m-chassis/products/tm935-mini-porsche-935-210mm>

225mm 6R4 (All versions) <https://landmodels.co.uk/collections/m-chassis/products/225mm-6r4-rothmans?variant=31774044913707>

TM130 BMW E30 M3 210mm <https://landmodels.co.uk/collections/m-chassis/products/tm130-mini-bmw-e30-m3-210mm>

Austin Mini Countryman 210mm <https://landmodels.co.uk/collections/m-chassis/products/austin-mini-countryman-210mm-m-chassis>

Honda Civic 3 210mm <https://landmodels.co.uk/collections/m-chassis/products/honda-civic-3-iii-pc-clear-body-shell-w-sticker-210mm-wheelbase>

TM211 Porsche 911 210mm (All Versions) <https://landmodels.co.uk/collections/m-chassis/products/tm211-porsche-911-210mm-tm211-martini>

Iconic Cup Touring Car Body Query Results

This document shows the results of Touring Car body shells that have had an eligibility query from a racer. It isn't a list of the only eligible/ineligible bodies, it is just a guide with the ones that have been queried.

Sumopower Niisan GTR

Stock	FF	Super Stock	GT
No	No	Yes	Yes



HPI Celica

Stock	FF	Super Stock	GT
Yes	Yes	Yes	Yes



Protoform Dodge Stratus

Stock	FF	Super Stock	GT
No	No	No	No



Team Losi Dodge Stratus

Stock	FF	Super Stock	GT
No	No	No	No



Tamiya Rakiri

Stock	FF	Super Stock	GT
No	No	Yes	Yes



Protoform GT40

Stock	FF	Super Stock	GT
No	No	No	Yes



Bitty Design Agata

Stock	FF	Super Stock	GT
No	No	No	Yes



Kyosho Pureten 2004 Astra

Stock	FF	Super Stock	GT
Yes	Yes	Yes	Yes



Nssmo Skylin

Stock	FF	Super Stock	GT
Yes	Yes	Yes	Yes



Protoform 99 Honda Accord

Stock	FF	Super Stock	GT
No	No	No	No



Holden Commodore (found on eBay, unknown make)

Stock	FF	Super Stock	GT
Yes	Yes	Yes	Yes



HPI Astra

Stock	FF	Super Stock	GT
Yes	Yes	Yes	Yes



Hot Bodies Honda Accord

Stock	FF	Super Stock	GT
No	No	No	No



Protoform Europa

Stock	FF	Super Stock	GT
No	Yes	No	No



HPI Peugeot 106

Stock	FF	Super Stock	GT
Yes	Yes	Yes	Yes



Protoform Corvette ZR1

Stock	FF	Super Stock	GT
No	No	No	No



Bitty Design Venom

Stock	FF	Super Stock	GT
No	No	No	No



HPI Honda Civic

Stock	FF	Super Stock	GT
Yes	Yes	Yes	Yes



HPI Honda Accord

Stock	FF	Super Stock	GT
No	No	No	No



Killer Bodies Lancia Beta Monte Carlo

Stock	FF	Super Stock	GT
No	No	Yes	Yes



HPI Zonda F

Stock	FF	Super Stock	GT
No	No	No	Yes



Carson BMW 320i

Stock	FF	Super Stock	GT
Yes	Yes	Yes	Yes



L&L Honda Accord Castrol

Stock	FF	Super Stock	GT
Yes	Yes	Yes	Yes

TC095



Tamiya Mustang GT4

Stock	FF	Super Stock	GT
No	No	Yes	Yes



Tamiya Porsche 911 GT3

Stock	FF	Super Stock	GT
No	No	Yes	Yes



HPI Impreza

Stock	FF	Super Stock	GT
Yes	Yes	Yes	Yes



Rcon Siren

Stock	FF	Super Stock	GT
Yes	Yes	Yes	Yes



Montech 308

Stock	FF	Super Stock	GT
No	No	No	No



Montech WR4

Stock	FF	Super Stock	GT
Yes	Yes	Yes	Yes



Evo Race Factory ARS3

Stock	FF	Super Stock	GT
No	No	No	No



Blitz MK9

Stock	FF	Super Stock	GT
No	No	No	No



Tamiya Celica LB Turbo

Stock	FF	Super Stock	GT
Yes	Yes	Yes	Yes



Tamiya Zakspeed Capri

Stock	FF	Super Stock	GT
Yes	Yes	Yes	Yes



3Racing MK9 Civic

Stock	FF	Super Stock	GT
No	Yes	No	No



Tamiya Raybrig Concept GT

Stock	FF	Super Stock	GT
No	No	Yes	Yes



Tamiya Subaru BRZ R&D Sport 2014

Stock	FF	Super Stock	GT
No	No	Yes	Yes



L and L Mondeo

Stock	FF	Super Stock	GT
Yes	Yes	Yes	Yes



HPI Nissan 350Z Greddy

Stock	FF	Super Stock	GT
No	No	Yes	Yes



HPI 7455 Lexus GS400

Stock	FF	Super Stock	GT
Yes	Yes	Yes	Yes



Phat Bodies VTCR

Stock	FF	Super Stock	GT
No	No	No	No



Mon-Tech RS GT3

Stock	FF	Super Stock	GT
No	No	No	Yes



Tamiya Nismo Coppermix Silvia

Stock	FF	Super Stock	GT
No	No	Yes	Yes



Tamiya HKS Racing Altezza

Stock	FF	Super Stock	GT
No	No	Yes	Yes



Bittydesign Seven20

Stock	FF	Super Stock	GT
No	No	No	Yes



RCMonstershop100 Mercedes Benz 190mm C Class

Stock	FF	Super Stock	GT
Yes	Yes	Yes	Yes



Zoo Racing BWOAH

Stock	FF	Super Stock	GT
No	No	No	No



L and L Mc Larren P1 GTR

Stock	FF	Super Stock	GT
No	No	No	Yes



Exotek R-Tek

Stock	FF	Super Stock	GT
No	No	No	No



Protoform Cadillac ATS V.R

Stock	FF	Super Stock	GT
No	No	Yes	Yes



Tamiya 2020 Ford GT mk.2

Stock	FF	Super Stock	GT
No	No	Yes	Yes



HPI BMW M3 GT

Stock	FF	Super Stock	GT
No	No	Yes	Yes



TeamC BMW DTM

Stock	FF	Super Stock	GT
No	No	No	No



TeamC Porsche 935

Stock	FF	Super Stock	GT
No	No	Yes	Yes



Rally Legends Fiat 131

Stock	FF	Super Stock	GT
Yes	Yes	Yes	Yes



L and L Opel Manta GT/E

Stock	FF	Super Stock	GT
Yes	Yes	Yes	Yes



HPI Nissan Skyline R34 GT-R

Stock	FF	Super Stock	GT
Yes	Yes	Yes	Yes



Matrixline BMW M3 E92

Stock	FF	Super Stock	GT
No	No	Yes	Yes



Tamiya Nissan Skyline R33

Stock	FF	Super Stock	GT
Yes	Yes	Yes	Yes



L and L Ford Sapphire Cosworth

Stock	FF	Super Stock	GT
Yes	Yes	Yes	Yes



Matrixline Ford Focus

Stock	FF	Super Stock	GT
Yes	Yes	Yes	Yes



Tamiya NSX 2016

Stock	FF	Super Stock	GT
No	No	Yes	Yes



Exotek Type A USGT

Stock	FF	Super Stock	GT
No	No	No	No



JKE Alfa 156

Stock	FF	Super Stock	GT
No	No	No	No



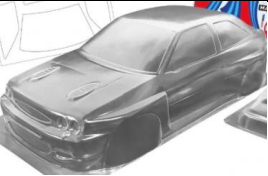
L and L Toyota Exiv JTCC

Stock	FF	Super Stock	GT
Yes	Yes	Yes	Yes



L and L Martini Escort Cosworth

Stock	FF	Super Stock	GT
Yes	Yes	Yes	Yes



Tamiya Opel Calibra V6 Cliff

Stock	FF	Super Stock	GT
Yes	Yes	Yes	Yes



Protoform:

#1408: Audi A4

#1410: BMW 320i

#1419: Alfa Romeo 156

#1436: BMW 3-Series

#1427: Dodge Stratus

#1420: Ford Mondeo

#1421: Honda Accord

#1416: Nissan Primera

#1429: Vauxhall Vectra

#1413: Volvo S40

#1406: Mercedes Benz

#1412: Honda 4-door Accord

#1437: Volvo S60 sedan

#1460: Alfa Romeo 2.0

Any Mazda version

Any Stratus version

Stock	FF	Super Stock	GT
No	No	No	No